

PARTS CATALOG

4630 / 4630N / 4630NO / 4630O
3cyl AG Tractor

Print No. FNHI7440L-4630NA
12/2010



PARTS CATALOG

4630 / 4630N / 4630NO / 4630O
3cyl AG Tractor

Print No. FNHI7440L-4630NA
12/2010



NEW HOLLAND

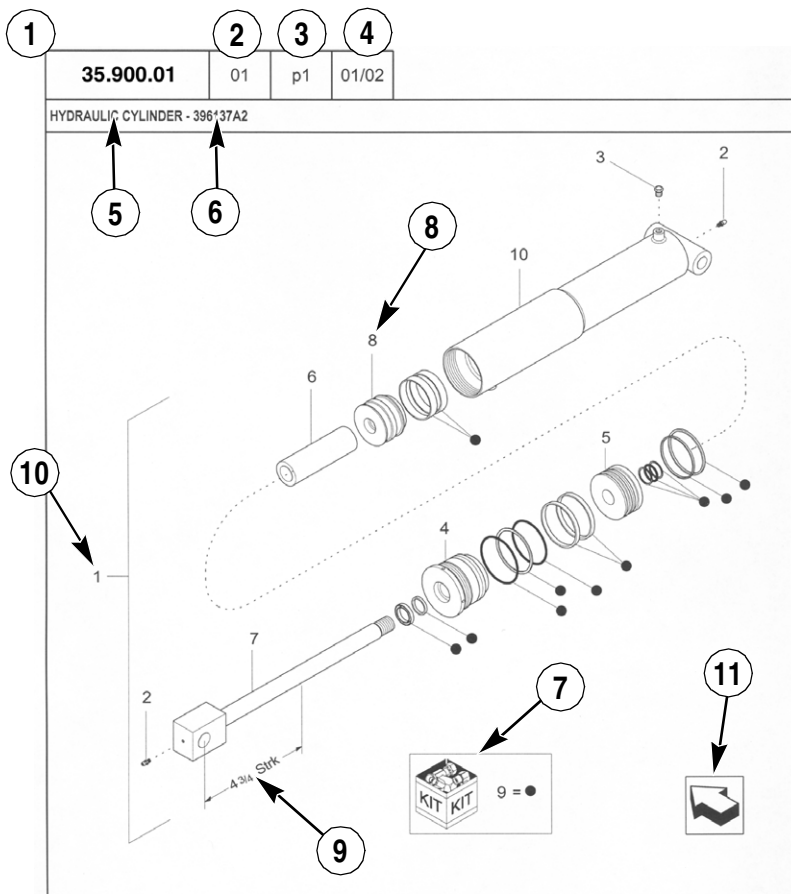
AGRICULTURE

GENERAL INFORMATION

1. Whenever the terms left and right are used, it should be understood to mean from a position facing in direction of travel.
2. Throughout this manual you may find common hardware not illustrated, but listed in the description column. The service part immediately preceding a hardware listing is the part using these particular items for mounting purposes. This hardware is not included with the service part or assembly when ordered as a replacement.
3. The illustrations show typical assemblies plus individual parts but in all cases may not show the exact shape or detail of parts required. However, the purpose for the illustrations is to identify parts performing like functions. Whenever possible illustrations are located at the beginning of each section or immediately adjacent to the applicable text.
4. CNH America LLC is continually striving to improve its products. We must, therefore, reserve the right to make improvements or changes when it becomes practical and possible to do so, without incurring any obligation to make changes or additions to the equipment sold previously.

CNH America LLC, Racine, WI 53404 U.S.A.

How to Use Your Parts Catalog



| HYDRAULIC CYLINDER - 396137A2 | | | | | |
|-------------------------------|----|-------------|-------------------|-----|--|
| REF | FN | PART NUMBER | YR/SN | QTY | DESCRIPTION |
| 1 | 1 | 396137A2 | BTW 01/85 & 02/02 | 1 | CYLINDER ASSY. 4-3/4 in strk, Inc 2-10 |
| 2 | | 31-95 | Before 01/85 | 2 | FITTING |
| 2 | | 219-8 | From 01/85 | 2 | NIPPLE, LUBE Grease, 1/4 tpr x 17/32 |
| 3 | | {402475A2} | | 1 | BREATHER |
| 4 | | 402474A1 | | 1 | CAP CYLINDER END |
| 5 | | 402468A1 | BSN JJC0189200 | 1 | PISTON ROD/GLAND |
| 5 | | 145221C3 | ASN JJC0189200 | 1 | PISTON |
| 6 | | 402471A1 | | 1 | SPACER |
| 7 | | 402473A1 | | 1 | ROD, PISTON |
| 8 | | 402469A1 | | 1 | PISTON ROD/GLAND |
| 9 | | 402476A1 | | 1 | PACKAGE, SEALS |
| 10 | | NSS | | 1 | NOT SERVICED SEPARAT CASE ASSEMBLY |
| (1) 08-20 | | | | | |
| STANDARD | | | MODELS | | |

How to Use Your Parts Catalog

1. Figure Number
2. Sequence code within the Figure Number
3. Page number within the Sequence Code
4. Date of Printing (month / year)
5. Figure Description
6. General information regarding the figure
7. Parts supplied in repair kits per symbol reference
8. Figure call-out of the part number (REF)
9. Technical Specifications relating to the part indicated
10. Figure call-out includes bracketed items, the included items may also be listed in the additional description area
11. Orientation - Arrow indicates front of the machine
12. Footnote - Additional information relating to the part number. In this example, 08-20 equals another figure that this part is shown on.
13. Part Number
 - NSS = Non-serviced parts
 - Bracketed numbers = not available as service parts in this market
14. Not Available as service part in this market
15. YR/SN
 - Year
 - Before 01/85 = Part valid for production January 1985 and before
 - From 01/85 = Part valid for production from January 1985 and after
 - BTW 01/85 & 02/02 = Part valid for machines produced between January 1985 and February 2002.
 - Serial Number (P.I.N.)
 - BSN JJC0268800 = Part valid for serial number JJC0268800 and below
 - ASN JJC0268800 = Part valid for serial number JJC0268800 and above
 - BTW JJC0178000 & JJC0179000 = Part valid for serial numbers between JJC0178000 & JJC0179000
16. Total Quantity of the Part referred to in the page. The quantity can be replaced by the following indications:
 - AR = quantity as required
 - X = as required
17. Part Description
18. Additional description of the part to help confirm identification
19. Figure Notes
20. Model Number(s)

Explanation of Abbreviations

| Abbreviation | Meaning |
|--------------|--|
| adj | adjustable |
| amp | ampere |
| AR | As required |
| ASN | Serial number and after / P.I.N. and after |
| barb | barb |
| blkhd | bulkhead |
| boss | boss |
| BSN | before serial number / before P.I.N |
| BTW | between |
| cc | cubic centimetre |
| chain | chain |
| cl | class |
| cp pt | cup point |
| CRS | Chrome Alloy Steel |
| CST | Carbon Steel |
| cu yd | cubic yard |
| deg | degree |
| dia | diameter |
| dr type | drive type |
| dry | dry |
| fc | face |
| fc sl | face seal |
| fem | female |
| fem PT | female pipe thread |
| fl | flare |
| ft | feet (or foot) |
| gal | gallon(s) |
| gr | grade |
| hd | head |
| hp | horsepower |
| ID | inside diameter |

| Abbreviation | Meaning |
|--------------|-------------------------------|
| in | inch(es) |
| Inc. | includes |
| inv fl | inverted flare |
| K | kilo |
| kg | kilogram |
| L | litre |
| lb | pound(s) |
| lg | long |
| LH | left hand |
| LH thd | left hand thread |
| links | links |
| M | (prefix) metric thread size |
| m | metre |
| male | male |
| mm | millimetre |
| NF | National Fine |
| No. | number |
| NS | National Super Fine |
| OD | outside diameter |
| ohm | electrical unit of resistance |
| Or | O-ring |
| orifice | orifice |
| P | pitch |
| piece | piece |
| psi | pounds per square inch |
| PT | pipe thread |
| rd | round |
| rd holes | round holes |
| RH | right hand |
| RH thd | right hand thread |
| rpm | revolutions per minute |

Explanation of Abbreviations

| Abbreviation | Meaning |
|--------------|-----------------|
| sl | self locking |
| slat | slat |
| spool | spool |
| sq | square |
| SST | Stainless Steel |
| st | self tapping |
| stem | stem |
| strk | stroke |
| sw | swivel |
| T | teeth |
| Teflon | Teflon |
| thin | thin |
| thk | thick |
| tpr | taper |

| Abbreviation | Meaning |
|--------------|-------------|
| tube | tube |
| type | type |
| V | volt(s) |
| W | watt(s) |
| way | way |
| wide | wide |
| X | as required |
| yd | yard |

Dimensions

Metric and U.S. hardware dimensions do not show the numeric designations of standard coarse threads. A number following a semi colon (;) is the class or grade of hardware. A comma (,) represents the decimal point (.) used in U.S. dimensions.



TABLE OF CONTENTS

| | | |
|-------|---|---|
| 01A01 | | FRONT WHEEL & HUBS |
| 01A02 | | FRONT WHEEL, (2) PIECE - 3430 LCG, 4630-O, 3930 |
| 01A03 | | FRONT WHEEL ASSEMBLY, W/FWD |
| 01A03 | A | FRONT WHEEL ASSEMBLY, WHEEL 2000 DESIGN, W/FWD |
| 01A04 | | STANDARD REAR WHEELS, ROUND DISC |
| 01A05 | | STANDARD REAR WHEELS, SQUARE DISC |
| 01A07 | | POWER ADJUSTABLE WHEEL, 28" |
| 01A08 | | POWER ADJUSTABLE WHEEL, 30" & 38" |
| 01B01 | | REAR WEIGHTS, MANUAL ADJUSTABLE WHEEL, W/SQUARE DISC, 24", 28", 30", 34", 36", 38" |
| 01B02 | | WEIGHTS, POWER ADJUSTABLE WHEEL (NHNA), 30" & 34" |
| 01B03 | | WEIGHTS, POWER ADJUSTABLE WHEEL, 38" |
| 01B04 | | WEIGHTS, MANUAL ADJUSTABLE WHEEL, 24" - 3930, 4630, 4630-O |
| 01B05 | | REAR WHEEL WEIGHT KIT, PRESSED STEEL DISC |
| 01B06 | | WEIGHTS, FRONT END |
| 02A01 | | BRAKES, 3 & 4 PLATE |
| 02B01 | | BRAKE CONTROLS & RELATED PARTS (NH-E) - 3430, 3930, 4130, 4630 |
| 02B02 | | BRAKE CONTROLS & RELATED PARTS, W/CAB - 3430, 3930, 3930H, 4130, 4630 |
| 02B03 | | BRAKE CONTROLS & RELATED PARTS, L/CAB - 3230, 3430, 3930, 4630, 4630-O |
| 02B04 | | TRANSMISSION HANDBRAKE, W/4WD, L/CAB - 3430, 3930, 3930N, 3930NO, 4130, 4630 |
| 02C01 | | TRAILER BRAKES (NH-E) - 3430, 3930, 4130, 4630 |
| 03A01 | | FRONT AXLE, STEERING & RELATED PARTS (3-90/5-93) |
| 03A02 | | FRONT AXLE, STEERING & RELATED PARTS, W/MANUAL (3-90/5-93) - 3430,3930, 4130; W/MANUAL & POWER - 4630 |
| 03A03 | | FRONT AXLE, STEERING & RELATED PARTS (6-93/5-94) |
| 03A04 | | FRONT AXLE, STEERING & RELATED PARTS (6-94/) |
| 03A05 | | FRONT AXLE ASSEMBLY (6-94/) - EXCEPT 3230 |
| 03B01 | | STEERING GEAR ASSEMBLY, MANUAL |
| 03B02 | | STEERING GEAR ASSEMBLY, POWER, SINGLE DROP ARM |
| 03B03 | | STEERING COLUMN, L/CAB - EXCEPT 3930H |
| 03B04 | | STEERING COLUMN, TILT, W/CAB - 3430, 3930, 3930H, 4130, 4630 |
| 03C01 | | POWER STEERING PUMP & RESERVOIR |
| 03D01 | | POWER STEERING CYLINDER (3-90/5-94) |
| 03D02 | | POWER STEERING CYLINDER, W/2WD (6-94/) |
| 03E01 | | POWER STEERING MOTOR, E9NN3A244BA & E8NN3A244AA BREAKDOWN |
| 03G01 | | AXLE SUPPORTS, HOUSINGS, STEERING CYLINDER & RELATED PARTS - 3230, 3430, 3930, 3930H, 4130, 4630 |
| 03G02 | | AXLE ASSEMBLY, W/FWD, 3930N, 3930NO, 4130N, 4130NO, 4630N & 4630NO |
| 03G03 | | AXLE SHAFT & PLANETARY ASSEMBLIES - 3230, 3430, 3930, 4130, 4630 |
| 03G04 | | RING GEAR, PINION & DIFFERENTIAL ASSEMBLY |
| 03G05 | | DRIVE SHAFT & SHIELD ASSEMBLY |
| 03G06 | | FRONT TRANSFER CASE, W/4WD |
| 03G08 | | TRANSFER CASE & CONTROLS, W/4 WHEEL BRAKING |
| 03G09 | | WATERPROOF DRIVE SHAFT - 3930, 4130, 4630 |
| 04A01 | | REAR AXLE CENTER HOUSING |
| 04A02 | | REAR AXLE CENTER HOUSING, L/4WD |
| 04B01 | | REAR AXLE FINAL DRIVE DIFFERENTIAL |
| 04B02 | | REAR AXLE & RELATED PARTS |
| 04C01 | | REAR FINAL DRIVE, RING GEAR & PINION |
| 04D01 | | DIFFERENTIAL LOCK CONTROLS |

TABLE OF CONTENTS

| | |
|-------|---|
| 05A01 | AUXILIARY SERVICE CONTROL VALVE |
| 05A02 | AUXILIARY SERVICE CONTROL PIPE & COUPLER |
| 05B01 | LIFT CONTROL & DRAFT CONTROL, W/CAB - 3430, 3930, 3930H, 4130, 4630 |
| 05B02 | LIFT CONTROL & DRAFT CONTROL, L/CAB (3-90/3-94) - EXCEPT 3930H |
| 05B03 | LIFT CONTROL & DRAFT CONTROL, L/CAB (4-94/) - 3430, 3930, 3930N, 3930NO, 4130, 4630 |
| 05C01 | FLOW CONTROL VALVE, FILTER & RELATED PARTS |
| 05C02 | FLOW CONTROL VALVE COMPONENTS |
| 05C03 | HYDRAULIC MANIFOLD, L/FLOW CONTROL VALVE (5-93/) |
| 05D01 | LIFT ARMS & SHAFTS |
| 05D02 | LIFT COVER |
| 05D03 | LIFT CYLINDER & RELATED PARTS |
| 05D04 | LIFT LINKAGE |
| 05E01 | LIFT LEVELING BOX ASSEMBLY, L/IN CAB LEVELING |
| 05E02 | LIFT LEVELING BOX ASSEMBLY, W/IN CAB |
| 05E03 | LIFT LEVELING BOX ASSEMBLY |
| 05E04 | LIFT LEVELING BOX ASSEMBLY (NH-E) |
| 05F01 | TRANSPORT LOCK, HPL, SWEDEN & KOREA |
| 05G01 | LIFT ASSIST RAM (NH-E) |
| 05H01 | REMOTE CONTROL VALVE ASSEMBLY, SINGLE SPOOL |
| 05H02 | REMOTE CONTROL VALVE ASSEMBLY, DOUBLE SPOOL |
| 05H03 | REMOTE CONTROL VALVE COUPLER & HOSES |
| 05J01 | REMOTE CONTROL VALVE ASSEMBLY, DELUXE |
| 05J02 | HANDLES, RH, DELUXE REMOTE CONTROL VALVE |
| 05J03 | MANIFOLD & TUBES, DELUXE REMOTE CONTROL |
| 05J04 | COUPLER KITS, DELUXE REMOTE CONTROL |
| 05J05 | COUPLER ASSEMBLY, DELUXE REMOTE CONTROL |
| 05J06 | ATTACHING PARTS, 3RD & 4TH DELUXE REMOTE CONTROL VALVE, L/CAB |
| 05J07 | ATTACHING PARTS, 3RD & 4TH DELUXE REMOTE, W/CAB - 3230, 3430, 3930, 3930H, 4130, 4630 |
| 05K01 | UNLOAD VALVE |
| 05K02 | UNLOAD VALVE & TUBING, W/(2) HYDRAULIC PUMPS, L/REMOTES |
| 05L01 | AUXILIARY PUMP KIT & RELATED PARTS, CENTER FOR LOADER APPLICATIONS |
| 05M01 | PUMP ASSEMBLY & RELATED PARTS, CENTER HOUSING MOUNTED |
| 05M02 | PUMP ASSEMBLY & RELATED PARTS, ENGINE MOUNTED |
| 06A01 | ENGINE, CYLINDER BLOCK, HEAD & RELATED PARTS |
| 06B01 | CRANKSHAFT, FLYWHEEL & RELATED PARTS |
| 06C01 | CAMSHAFT, ROCKER ARMS, VALVES & RELATED PARTS |
| 06D01 | PISTONS & CONNECTING RODS |
| 06E01 | OIL PUMP & OIL PAN |
| 06F01 | MANIFOLD & EXHAUST SYSTEM |
| 06F02 | TURBOCHARGER, MANIFOLD & RELATED PARTS - 4630, 3930 & 4630 EMISSIONIZED |
| 06G01 | TURBOCHARGER ASSEMBLY - 4630, 3930 & 4630 EMISSIONIZED |
| 06H01 | GASKET KITS |
| 07A01 | SYNCHRONIZED TRANSMISSION, W/8 X 8, 16 X 8, L/CAB - EXCEPT 3930H |
| 07A02 | SYNCHRONIZED TRANSMISSION, W/8 X 8, 16 X 8, W/CAB - 3430, 3930, 3930H, 4130, 4630 |
| 07B01 | REAR COVER, W/SYNCHRONIZED TRANSMISSION, W/8 X 8, 16 X 8 |
| 07C01 | FRONT COVER, W/SYNCHRONIZED TRANSMISSION, W8 X 8 |
| 07C02 | FRONT COVER, W/SYNCHRONIZED TRANSMISSION, W/16 X 8 |

TABLE OF CONTENTS

| | |
|-------|---|
| 07D01 | FRONT HOUSING, W/SYNCHRONIZED TRANSMISSION, W/8 X 8 |
| 07E01 | VALVE HOUSING & VALVE, W/SYNCHRONIZED TRANSMISSION, W/16 X 8 |
| 07F01 | PIPELINE, W/SYNCHRONIZED TRANSMISSION, W/8 X 8 |
| 07F02 | PIPELINE, W/SYNCHRONIZED TRANSMISSION, W/16 X 8 |
| 07G01 | INPUT SHAFT & GEARS, W/SYNCHRONIZED TRANSMISSION, W/8 X 8 |
| 07H01 | CLUTCH INPUT SHAFT, W/SYNCHRONIZED TRANSMISSION, W/16 X 8 |
| 07J01 | PTO SHAFT & GEARS, W/SYNCHRONIZED TRANSMISSION, W/8 X 8 |
| 07J02 | PTO SHAFT & GEARS, W/SYNCHRONIZED TRANSMISSION, W/16 X 8 |
| 07K01 | LOW & BACK GEARS, W/SYNCHRONIZED TRANSMISSION, W/16 X 8 |
| 07L01 | BACK IDLE SHAFT, W/SYNCHRONIZED TRANSMISSION, W/8 X 8 |
| 07L02 | BACK IDLE SHAFT, W/SYNCHRONIZED TRANSMISSION, W/16 X 8 |
| 07M01 | OUTPUT SHAFT & GEARS, SHIFTER 1 & 2, W/SYNCHRONIZED TRANSMISSION, W/8 X 8, 16 X 8 |
| 07N01 | SHIFTER 1 & 2, W/SYNCHRONIZED TRANSMISSION, W/8 X 8, 16 X 8, L/CAB - EXCEPT 3930H |
| 07N02 | SHIFTER 1 & 2, W/SYNCHRONIZED TRANSMISSION, W/8 X 8, 16 X 8, W/CAB - 3430, 3930, 3930H, 4130, 4630 |
| 07P01 | SHIFTER 3 & 4, HIGH & LOW, W/SYNCHRONIZED TRANSMISSION, W/8 X 8, L/CAB - EXCEPT 3930H |
| 07P02 | SHIFTER 3 & 4, HIGH & LOW, W/SYNCHRONIZED TRANSMISSION, W/8 X 8, 16 X 8, W/CAB - 3430,3930,3930H,4130,4630 |
| 07Q01 | SHIFTER FRONT & REAR, W/SYNCHRONIZED TRANSMISSION, W/8 X 8, L/CAB - EXCEPT 3930H |
| 07Q02 | SHIFTER FRONT & REAR, W/SYNCHRONIZED TRANSMISSION, W/8 X 8, W/CAB - 3230,3430,3930,3930H,4130,4630 |
| 07Q03 | SHIFTER FRONT & REAR, W/SYNCHRONIZED TRANSMISSION, W/16 X 8, L/CAB - EXCEPT 3930H |
| 07Q04 | SHIFTER FRONT & REAR, W/SYNCHRONIZED TRANSMISSION, W/16 X 8, W/CAB - 3430,3930,3930H,4130,4630 |
| 07R01 | SHIFT LEVERS, W/SYNCHRONIZED TRANSMISSION, W/8 X 8, 16 X 8, L/CAB - EXCEPT 3930H |
| 07R02 | SHIFT LEVERS, W/SYNCHRONIZED TRANSMISSION, W/8 X 8, 16 X 8, W/CAB - 3430, 3930,3930H,4130,4630 |
| 07T01 | TRANSMISSION ASSEMBLY, CASE & SHIFT FORKS, W/NON-SYNCHRONIZED TRANSMISSION, 8 SPEED, W/8 X 2 |
| 07T02 | GEARS & RELATED PARTS, W/NON-SYNCHRONIZED TRANSMISSION, 8-SPEED, W/8 X 2 |
| 07U01 | PTO COVER, 2-SPEED SHIFTABLE, W/8 X 8, 16 X 8 (NH-E) |
| 07U02 | PTO COVER ASSEMBLY |
| 07U03 | PTO COVER & RELATED PARTS, W/8 X 2 |
| 07U04 | PTO SHIFT CONTROL |
| 07U05 | PTO CLUTCH & RELATED PARTS |
| 07U06 | PTO CLUTCH VALVES |
| 07U07 | PTO, 2-SPEED SHIFTABLE, W/2WD |
| 07U08 | PTO CONTROL LEVER & RELATED PARTS, W/CAB - 3430, 3930, 3930H, 4130, 4630 |
| 07U10 | PTO HANDLE ASSEMBLY & RELATED PARTS |
| 07U11 | PTO GUARD, HINGED |
| 07U12 | PTO GUARD, DETACHABLE |
| 07V01 | OIL COOLERS, HYDRAULIC & TRANSMISSION |
| 07W01 | CLUTCH ASSEMBLY, W/CAB, W/13" CLUTCH - 3430, 3930, 3930H, 4130, 4630 |
| 07W02 | CLUTCH ASSEMBLY, L/CAB, W/13" CLUTCH - 3230, 3430, 3930, 4130, 4630 |

TABLE OF CONTENTS

| | | |
|-------|---|---|
| 07X01 | | MAIN SHIFT LEVERS, W/SYNCHRONIZED TRANSMISSION, W/16 X 8, W/CAB - 3430, 3930, 4130, 4630 |
| 07X02 | | SHUTTLE SHIFT CONTROL, W/SYNCHRONIZED TRANSMISSION, L/CAB - EXCEPT 3930H |
| 07X03 | | SHUTTLE SHIFT CONTROL, W/SYNCHRONIZED TRANSMISSION, W/CAB - 3430, 3930, 3930H, 4130, 4630 |
| 07X04 | | SHIFT CONTROL, W/CAB, W/8 X 8; W/SYNCHRONIZED TRANSMISSION, W/16 X 8, W/DUAL POWER |
| 07X05 | | SHIFTER ASSEMBLY, REVERSE - 3430, 3930, 3930H, 4130, 4630, 4630-O |
| 07Y01 | | REDUCTION GEARBOX ASSEMBLY, W/CREEPER, W/NON-SYNCHRONIZED TRANSMISSION, W/8 X 2, D.I.A. |
| 08A01 | | RADIATOR & RELATED PARTS |
| 08B01 | | WATER PUMP & RELATED PARTS |
| 08C01 | | OIL COOLER & RELATED PARTS FOR HORIZONTAL EXHAUST- 4130; W/HEADLAND PISTONS - 4630 |
| 08C01 | A | OIL COOLER & RELATED PARTS FOR VERTICAL EXHAUST - 4130; W/HEADLAND PISTONS - 4630 |
| 08D01 | | WATER FILTER, L/CAB, EXCEPT 3930H |
| 08D02 | | WATER FILTER, W/CAB, 3430, 3930, 3930H, 4130 & 4630 |
| 09A01 | | FUEL SYSTEM, NON-EMISSIONIZED (3/90-12/97) |
| 09A02 | | FUEL SYSTEM, EMISSIONIZED (1/98) |
| 09B01 | | FUEL TANK & RELATED PARTS |
| 09C01 | | FUEL TANK & RELATED PARTS, AUXILIARY |
| 09D01 | | FUEL INJECTION PUMP, DPA ROTARY, UPPER HALF |
| 09D02 | | FUEL INJECTION PUMP, DPA ROTARY, LOWER HALF |
| 09E01 | | FUEL SEDIMENTER & FILTER ASSEMBLY |
| 09E02 | | FUEL FILTER ASSEMBLY, EMISSIONIZED (1-98/) |
| 09F01 | | FUEL INJECTOR ASSEMBLY |
| 09G01 | | TUBE & CLAMP ASSEMBLY, FUEL INJECTION |
| 09H01 | | DIESEL COLD START |
| 09J01 | | THROTTLE CONTROLS, W/CAB - 3430, 3930, 3930H, 4130, 4630 |
| 09J02 | | THROTTLE CONTROLS, L/CAB - EXCEPT 3930H |
| 09K01 | | AIR CLEANER ASSEMBLY, DRY |
| 09K02 | | AIR CLEANER ASSEMBLY, OIL BATH TYPE |
| 09L01 | | FUEL PRIMER ASSEMBLY, DIESEL, D.I.A. - 4130, 4630 |
| 09L02 | | FUEL PRIMER ASSEMBLY |
| 11A01 | L | ELECTRICAL SYSTEM, LH, L/CAB, EXCEPT 3930H |
| 11A01 | R | ELECTRICAL SYSTEM, RH, L/CAB, EXCEPT 3930H |
| 11A02 | L | ELECTRICAL SYSTEM, LH, W/CAB, 3430, 3930, 3930H, 4130 & 4630 |
| 11A02 | R | ELECTRICAL SYSTEM, RH, W/CAB, 3430, 3930, 3930H, 4130 & 4630 |
| 11B01 | | HARNESS, TRANSMISSION & AUXILIARY FUEL TANK |
| 11C01 | | REAR WIRING, W/CROWN FENDERS, NH-E, 3430, 3930, 4130 & 4630 |
| 11C02 | | REAR WIRING, W/CROWN FENDERS (NH-E) - 3930, 3930N, 3930NO, 4630N, 4630NO |
| 11C03 | | REAR WIRING, W/WIDE FENDERS, NH-E, EXCEPT 3230 |
| 11C04 | | REAR WIRING, W/FLAT TOP FENDERS (NH-E) - 3930N, 4130N, 4630N |
| 11D01 | | HEADLAMP ASSY., OUTSET FRONT MOUNTED, NHNA - 3230,3430,3930,3930N, 3930NO(STANDARD);4630,4630-O(OPTIONAL) |
| 11D02 | | INSET HEADLAMP ASSEMBLY |
| 11D03 | | HEADLAMP ASSEMBLY, FENDER MOUNTED (NHNA) - 3930, 4630 |
| 11D04 | | HEADLAMP, SIDE MOUNTED, 3930, 4130 & 4630 |
| 11E01 | | LAMP ASSEMBLY, REAR STOP & TURN SIGNAL |

TABLE OF CONTENTS

| | |
|-------|--|
| 11E02 | LAMP ASSEMBLY, EMERGENCY WARNING, W/CROWN FENDERS (NHNA) |
| 11E03 | REAR LAMP ASSEMBLY, STOP & FLASHER, L/CAB, W/FLAT TOP FENDERS - 3930N, 4130N, 4630N |
| 11E04 | REAR LAMP ASSEMBLY, STOP & FLASHER, W/WIDE FENDERS, W/CAB - 3430, 3930, 3930H, 4130, 4630 |
| 11E05 | REAR LAMP ASSEMBLY, SIDE & FLASHER, L/CAB, W/FLAT TOP FENDERS - 3930N, 4130N, 4630N |
| 11E06 | REAR LAMP ASSEMBLY, SIDE & FLASHER, W/CAB, W/WIDE FENDERS - 3430, 3930, 3930H, 4130, 4630 |
| 11E07 | LAMP ASSEMBLY, SIDE & FLASHER, W/CAB (NH-E) - 3930, 3930H, 4130, 4630 |
| 11E08 | LAMP ASSEMBLY, SIDE TURN SIGNAL, W/CROWN FENDERS - 3430,3930,3930N, 3930NO,4130,4630,4630N,4630NO |
| 11E09 | LAMP ASSEMBLY & MOUNTING, LICENSE PLATE |
| 11E10 | LAMP ASSEMBLY, SIDE & TURN SIGNAL |
| 11F01 | BATTERY & BATTERY SUPPORT |
| 11G01 | STARTER MOTOR ASSEMBLY |
| 11G02 | STARTER MOTOR ASSEMBLY |
| 11H01 | ALTERNATOR ASSEMBLY, 55 & 70 AMP, L/CAB, W/8 X 2; W/CAB, W/8 X 2, 8 X 8, 16 X 8, NHNA |
| 11H02 | ALTERNATOR ASSEMBLY, 45 AMP, L/CAB, W/8 X 2, NHNA (6-92/) - 3430, 3930, 4630, 4630-O |
| 11I01 | TRAILER SOCKETS, 7 POLE, L/CAB (NH-E) |
| 11I02 | TRAILER & AUXILIARY SOCKETS, W/CAB - 3430, 3930, 3930H, 4130, 4630 |
| 11J01 | PLOW LAMP, W/CAB (3-90/10-91), 3430, 3930, 3930H, 4130 & 4630 |
| 11J01 | A REAR WORKLAMPS, W/CAB (11-91/), 3430, 3930, 3930H, 4130 & 4630 |
| 11J03 | PLOW LAMP, W/FLAT-TOP FENDERS, NHNA, 3930 & 4630; W/WIDE FENDERS (NH-E), 3430, 3930, 4130 & 4630 |
| 11J04 | WORKLAMP, W/CROWN FENDERS, NHNA, 3230, 3430, 3930, 4130, 4630 & 4630-O |
| 11K01 | REFLECTOR, LOW POSITION |
| 11K02 | LAMP ASSEMBLY, PLOUGH |
| 12A01 | INSTRUMENT CLUSTER & RELATED PARTS |
| 12B01 | HOURMETER ASSEMBLY, ELECTRIC, D.I.A. (NHNA) |
| 12B02 | CIGAR LIGHTER ASSEMBLY, D.I.A. (NHNA) |
| 12B03 | OIL PRESSURE GAUGE, D.I.A. (NHNA) |
| 12B04 | VOLTMETER ASSEMBLY, L/CAB, D.I.A. (NHNA) - 3430, 3930, 3930H, 4130, 4630 |
| 12C01 | SPEEDOMETER, NH-E |
| 13A01 | SEAT ASSEMBLY, AIR SUSPENSION, BOSTROM, W/CAB - 3430, 3930, 3930H, 4130, 4630 |
| 13B01 | SEAT ASSEMBLY, ECONOMY, BOSTROM |
| 13C01 | SEAT ASSEMBLY, GRAMMER, L/CAB - EXCEPT 3930H |
| 13D01 | SEAT ASSEMBLY, GRAMMER, L/CAB - 3930N, 3930NO, 4130N, 4130NO, 4630N, 4630NO |
| 14A01 | RADIATOR SHELL & RELATED PARTS |
| 14B01 | ENGINE COVERS |
| 14C01 | CROWN FENDERS, RUNNING BOARDS, TOOL BOX & RELATED PARTS |
| 14C02 | FLAT TOP FENDERS, RUNNING BOARDS & RELATED PARTS - 3930,3930N,3930NO, 4130N,4130NO,4630,4630N,4630NO |
| 14C03 | FLAT TOP FENDERS, RUNNING BOARDS & RELATED PARTS (NH-E) |
| 14C04 | FRONT FENDERS |
| 14C05 | REAR FENDERS, ROPS MOUNTED (7-94/) |
| 14D01 | STEERING GEAR COVER |

TABLE OF CONTENTS

| | |
|-------|---|
| 14E01 | TOOL BOX & RELATED PARTS (3-90/1-96) |
| 14E02 | TOOL BOX & RELATED PARTS (2-96/) |
| 14F01 | REFLECTORS (NH-E) |
| 15A01 | CAB ASSEMBLY, COMPLETE - 3430, 3930, 3930H, 4130, 4630 |
| 15B01 | ROOF ASSEMBLY, OUTER - 3430, 3930, 3930H, 4130, 4630 |
| 15B02 | ROOF ASSEMBLY, INNER - 3430, 3930, 3930H, 4130, 4630 |
| 15C01 | DOOR ASSEMBLY - 3430, 3930, 3930H, 4130, 4630 |
| 15C02 | WINDOWS & RELATED PARTS - 3430, 3930, 3930H, 4130, 4630 |
| 15D01 | FENDERS, INSTRUMENT PANEL & RELATED PARTS - 3430, 3930, 3930H, 4130, 4630 |
| 15D02 | FLOOR MATS & RELATED PARTS - 3430, 3930, 3930H, 4130, 4630 |
| 15D03 | INSULATION - 3430, 3930, 3930H, 4130, 4630 |
| 15E01 | CAB MOUNTING PARTS, 3430, 3930, 3930H, 4130 & 4630 |
| 15F01 | HEATER ASSEMBLY - 3430, 3930, 3930H, 4130, 4630 |
| 15F02 | MIRRORS - REAR VIEW - 3430, 3930, 3930H, 4130, 4630 |
| 15F03 | WINDSHIELD WIPER & WASHER - 3430, 3930, 3930H, 4130, 4630 |
| 15G01 | ROLLBAR FRAME ASSEMBLY (NH-E) |
| 15G02 | ROLLOVER PROTECTION, FOLDABLE (NH-E) |
| 15G03 | ROLLOVER PROTECTION, FOLDABLE (NH-E) |
| 15G04 | ROPS, TELESCOPING (NHNA) |
| 15G05 | ROPS (NHNA) - 3930N, 3930NO, 4130N, 4130NO, 4630N, 4630NO |
| 15G06 | ROPS (NHNA) - 3230, 3430, 3930, 3930H, 4130, 4630, 4630-O |
| 15G07 | ROPS, FOLDABLE (NHNA) - 3230, 3430, 3930, 3930H, 4130, 4630, 4630-O |
| 15H01 | WINDOWS, W/LOW PROFILE CAB - 3430, 3930, 3930H, 4130, 4630 |
| 15H02 | DOOR, W/LOW PROFILE CAB - 3430, 3930, 3930H, 4130, 4630 |
| 15H03 | INTERIOR, W/LOW PROFILE CAB - 3430, 3930, 3930H, 4130 |
| 15H04 | CAB ASSEMBLY, LOW PROFILE - 3430, 3930, 3930H, 4130, 4630 |
| 15J01 | ROOF, W/LOW PROFILE CAB - 3430, 3930, 3930H, 4130, 4630 |
| 15K01 | HEATER & RELATED PARTS, W/LOW PROFILE CAB, 3430, 3930, 4130 & 4630 |
| 16A01 | DECALS, MODEL IDENTIFICATION |
| 16B01 | INSTRUCTION, AUXILIARY SERVICE CONTROL, HYDRAULIC POWER LIFT, REMOTE CONTROL |
| 16B02 | INSTRUCTION, OPERATION & SAFETY (NH-E) - EXCEPT 3230 |
| 16B03 | INSTRUCTION, OPERATION & SAFETY |
| 16B04 | INSTRUCTION, OPERATION & SAFETY |
| 16B05 | INSTRUCTION, OPERATION & SAFETY |
| 16C01 | WARNING, OPERATION & SAFETY |
| 16D01 | SHIFT PATTERN & SPEED INDICATOR |
| 17A01 | SWINGING DRAWBAR ASSEMBLY, W/CENTER TOW PIN (NH-E) |
| 17A02 | SWINGING DRAWBAR ASSEMBLY |
| 17B01 | AUTOMATIC PICK-UP HITCH (NH-E) |
| 17C01 | LUBRICATION EQUIPMENT |
| 17D01 | PAINT (NHNA) |
| 17E01 | RADIO & RELATED PARTS |
| 17F01 | SAFETY EQUIPMENT |
| 17G01 | EXTERNAL LIFT CHECK CHAINS |
| 17H01 | STABILIZER ASSEMBLY (3-90/8-93) |
| 17H02 | STABILIZER ASSEMBLY (9-93/) |
| 17J01 | TOOL KIT |
| 17K01 | FRONT TOW HOOK, L/FRONT WEIGHTS (NH-E) |
| 17K02 | REAR TOW HOOK (NH-E) |
| 17L01 | ENGINE COOLANT HEATER KIT |

ALPHABETICAL INDEX**FIGURE****SEQ.**

| | | |
|---|-------|---|
| AIR CLEANER ASSEMBLY, DRY | 09K01 | |
| AIR CLEANER ASSEMBLY, OIL BATH TYPE | 09K02 | |
| ALTERNATOR ASSEMBLY, 45 AMP, L/CAB, W/8 X 2, NHNA (6-92) - 3430, 3930, 4630, 4630-O | 11H02 | |
| ALTERNATOR ASSEMBLY, 55 & 70 AMP, L/CAB, W/8 X 2; W/CAB, W/8 X 2, 8 X 8, 16 X 8, NHNA | 11H01 | |
| ATTACHING PARTS, 3RD & 4TH DELUXE REMOTE CONTROL VALVE, L/CAB | 05J06 | |
| ATTACHING PARTS, 3RD & 4TH DELUXE REMOTE, W/CAB - 3230, 3430, 3930, 3930H, 4130, 4630 | 05J07 | |
| AUTOMATIC PICK-UP HITCH (NH-E) | 17B01 | |
| AUXILIARY PUMP KIT & RELATED PARTS, CENTER FOR LOADER APPLICATIONS | 05L01 | |
| AUXILIARY SERVICE CONTROL PIPE & COUPLER | 05A02 | |
| AUXILIARY SERVICE CONTROL VALVE | 05A01 | |
| AXLE ASSEMBLY, W/FWD, 3930N, 3930NO, 4130N, 4130NO, 4630N & 4630NO | 03G02 | |
| AXLE SHAFT & PLANETARY ASSEMBLIES - 3230, 3430, 3930, 4130, 4630 | 03G03 | |
| AXLE SUPPORTS, HOUSINGS, STEERING CYLINDER & RELATED PARTS - 3230, 3430, 3930, 3930H, 4130, 4630 | 03G01 | |
| BACK IDLE SHAFT, W/SYNCHRONIZED TRANSMISSION, W/16 X 8 | 07L02 | |
| BACK IDLE SHAFT, W/SYNCHRONIZED TRANSMISSION, W/8 X 8 | 07L01 | |
| BATTERY & BATTERY SUPPORT | 11F01 | |
| BRAKE CONTROLS & RELATED PARTS (NH-E) - 3430, 3930, 4130, 4630 | 02B01 | |
| BRAKE CONTROLS & RELATED PARTS, L/CAB - 3230, 3430, 3930, 4630, 4630-O | 02B03 | |
| BRAKE CONTROLS & RELATED PARTS, W/CAB - 3430, 3930, 3930H, 4130, 4630 | 02B02 | |
| BRAKES, 3 & 4 PLATE | 02A01 | |
| CAB ASSEMBLY, COMPLETE - 3430, 3930, 3930H, 4130, 4630 | 15A01 | |
| CAB ASSEMBLY, LOW PROFILE - 3430, 3930, 3930H, 4130, 4630 | 15H04 | |
| CAB MOUNTING PARTS, 3430, 3930, 3930H, 4130 & 4630 | 15E01 | |
| CAMSHAFT, ROCKER ARMS, VALVES & RELATED PARTS | 06C01 | |
| CIGAR LIGHTER ASSEMBLY, D.I.A. (NHNA) | 12B02 | |
| CLUTCH ASSEMBLY, L/CAB, W/13" CLUTCH - 3230, 3430, 3930, 4130, 4630 | 07W02 | |
| CLUTCH ASSEMBLY, W/CAB, W/13" CLUTCH - 3430, 3930, 3930H, 4130, 4630 | 07W01 | |
| CLUTCH INPUT SHAFT, W/SYNCHRONIZED TRANSMISSION, W/16 X 8 | 07H01 | |
| COUPLER ASSEMBLY, DELUXE REMOTE CONTROL | 05J05 | |
| COUPLER KITS, DELUXE REMOTE CONTROL | 05J04 | |
| CRANKSHAFT, FLYWHEEL & RELATED PARTS | 06B01 | |
| CROWN FENDERS, RUNNING BOARDS, TOOL BOX & RELATED PARTS | 14C01 | |
| DECALS, MODEL IDENTIFICATION | 16A01 | |
| DIESEL COLD START | 09H01 | |
| DIFFERENTIAL LOCK CONTROLS | 04D01 | |
| DOOR ASSEMBLY - 3430, 3930, 3930H, 4130, 4630 | 15C01 | |
| DOOR, W/LOW PROFILE CAB - 3430, 3930, 3930H, 4130, 4630 | 15H02 | |
| DRIVE SHAFT & SHIELD ASSEMBLY | 03G05 | |
| ELECTRICAL SYSTEM, LH, L/CAB, EXCEPT 3930H | 11A01 | L |
| ELECTRICAL SYSTEM, LH, W/CAB, 3430, 3930, 3930H, 4130 & 4630 | 11A02 | L |
| ELECTRICAL SYSTEM, RH, L/CAB, EXCEPT 3930H | 11A01 | R |
| ELECTRICAL SYSTEM, RH, W/CAB, 3430, 3930, 3930H, 4130 & 4630 | 11A02 | R |
| ENGINE COOLANT HEATER KIT | 17L01 | |
| ENGINE COVERS | 14B01 | |

| | | |
|--|-------|---|
| ENGINE, CYLINDER BLOCK, HEAD & RELATED PARTS | 06A01 | |
| EXTERNAL LIFT CHECK CHAINS | 17G01 | |
| FENDERS, INSTRUMENT PANEL & RELATED PARTS - 3430, 3930, 3930H, 4130, 4630 | 15D01 | |
| FLAT TOP FENDERS, RUNNING BOARDS & RELATED PARTS - 3930,3930N,3930NO,4130N,4130NO,4630,4630N,4630NO | 14C02 | |
| FLAT TOP FENDERS, RUNNING BOARDS & RELATED PARTS (NH-E) | 14C03 | |
| FLOOR MATS & RELATED PARTS - 3430, 3930, 3930H, 4130, 4630 | 15D02 | |
| FLOW CONTROL VALVE COMPONENTS | 05C02 | |
| FLOW CONTROL VALVE, FILTER & RELATED PARTS | 05C01 | |
| FRONT AXLE ASSEMBLY (6-94/) - EXCEPT 3230 | 03A05 | |
| FRONT AXLE, STEERING & RELATED PARTS (3-90/5-93) | 03A01 | |
| FRONT AXLE, STEERING & RELATED PARTS (6-93/5-94) | 03A03 | |
| FRONT AXLE, STEERING & RELATED PARTS (6-94/) | 03A04 | |
| FRONT AXLE, STEERING & RELATED PARTS, W/MANUAL (3-90/5-93) - 3430,3930,4130; W/MANUAL & POWER - 4630 | 03A02 | |
| FRONT COVER, W/SYNCHRONIZED TRANSMISSION, W/16 X 8 | 07C02 | |
| FRONT COVER, W/SYNCHRONIZED TRANSMISSION, W8 X 8 | 07C01 | |
| FRONT FENDERS | 14C04 | |
| FRONT HOUSING, W/SYNCHRONIZED TRANSMISSION, W/8 X 8 | 07D01 | |
| FRONT TOW HOOK, L/FRONT WEIGHTS (NH-E) | 17K01 | |
| FRONT TRANSFER CASE, W/4WD | 03G06 | |
| FRONT WHEEL & HUBS | 01A01 | |
| FRONT WHEEL ASSEMBLY, W/FWD | 01A03 | |
| FRONT WHEEL ASSEMBLY, WHEEL 2000 DESIGN, W/FWD | 01A03 | A |
| FRONT WHEEL, (2) PIECE - 3430 LCG, 4630-O, 3930 | 01A02 | |
| FUEL FILTER ASSEMBLY, EMISSIONIZED (1-98/) | 09E02 | |
| FUEL INJECTION PUMP, DPA ROTARY, LOWER HALF | 09D02 | |
| FUEL INJECTION PUMP, DPA ROTARY, UPPER HALF | 09D01 | |
| FUEL INJECTOR ASSEMBLY | 09F01 | |
| FUEL PRIMER ASSEMBLY | 09L02 | |
| FUEL PRIMER ASSEMBLY, DIESEL, D.I.A. - 4130, 4630 | 09L01 | |
| FUEL SEDIMENTER & FILTER ASSEMBLY | 09E01 | |
| FUEL SYSTEM, EMISSIONIZED (1/98) | 09A02 | |
| FUEL SYSTEM, NON-EMISSIONIZED (3/90-12/97) | 09A01 | |
| FUEL TANK & RELATED PARTS | 09B01 | |
| FUEL TANK & RELATED PARTS, AUXILIARY | 09C01 | |
| GASKET KITS | 06H01 | |
| GEARS & RELATED PARTS, W/NON-SYNCHRONIZED TRANSMISSION, 8-SPEED, W/8 X 2 | 07T02 | |
| HANDLES, RH, DELUXE REMOTE CONTROL VALVE | 05J02 | |
| HARNESS, TRANSMISSION & AUXILIARY FUEL TANK | 11B01 | |
| HEADLAMP ASSEMBLY, FENDER MOUNTED (NHNA) - 3930, 4630 | 11D03 | |
| HEADLAMP ASSY., OUTSET FRONT MOUNTED, NHNA - 3230,3430,3930,3930N,3930NO(STANDARD);4630,4630-O(OPTIONAL) | 11D01 | |
| HEADLAMP, SIDE MOUNTED, 3930, 4130 & 4630 | 11D04 | |
| HEATER & RELATED PARTS, W/LOW PROFILE CAB, 3430, 3930, 4130 & 4630 | 15K01 | |
| HEATER ASSEMBLY - 3430, 3930, 3930H, 4130, 4630 | 15F01 | |
| HOURLMETER ASSEMBLY, ELECTRIC, D.I.A. (NHNA) | 12B01 | |
| HYDRAULIC MANIFOLD, L/FLOW CONTROL VALVE (5-93/) | 05C03 | |
| INPUT SHAFT & GEARS, W/SYNCHRONIZED TRANSMISSION, W/8 X 8 | 07G01 | |
| INSET HEADLAMP ASSEMBLY | 11D02 | |
| INSTRUCTION, AUXILIARY SERVICE CONTROL, HYDRAULIC POWER LIFT, REMOTE CONTROL | 16B01 | |
| INSTRUCTION, OPERATION & SAFETY | 16B05 | |
| INSTRUCTION, OPERATION & SAFETY | 16B04 | |
| INSTRUCTION, OPERATION & SAFETY | 16B03 | |

| | | |
|--|-------|---|
| INSTRUCTION, OPERATION & SAFETY (NH-E) - EXCEPT 3230 | 16B02 | |
| INSTRUMENT CLUSTER & RELATED PARTS | 12A01 | |
| INSULATION - 3430, 3930, 3930H, 4130, 4630 | 15D03 | |
| INTERIOR, W/LOW PROFILE CAB - 3430, 3930, 3930H, 4130 | 15H03 | |
| IPTO CLUTCH & RELATED PARTS | 07U05 | |
| IPTO CONTROL LEVER & RELATED PARTS, W/CAB - 3430, 3930, 3930H, 4130, 4630 | 07U08 | |
| IPTO COVER & RELATED PARTS, W/8 X 2 | 07U03 | |
| IPTO HANDLE ASSEMBLY & RELATED PARTS | 07U10 | |
| LAMP ASSEMBLY & MOUNTING, LICENSE PLATE | 11E09 | |
| LAMP ASSEMBLY, EMERGENCY WARNING, W/CROWN FENDERS (NHNA) | 11E02 | |
| LAMP ASSEMBLY, PLOUGH | 11K02 | |
| LAMP ASSEMBLY, REAR STOP & TURN SIGNAL | 11E01 | |
| LAMP ASSEMBLY, SIDE & FLASHER, W/CAB (NH-E) - 3930, 3930H, 4130, 4630 | 11E07 | |
| LAMP ASSEMBLY, SIDE & TURN SIGNAL | 11E10 | |
| LAMP ASSEMBLY, SIDE TURN SIGNAL, W/CROWN FENDERS - 3430,3930,3930N,3930NO,4130,4630,4630N,4630NO | 11E08 | |
| LIFT ARMS & SHAFTS | 05D01 | |
| LIFT ASSIST RAM (NH-E) | 05G01 | |
| LIFT CONTROL & DRAFT CONTROL, L/CAB (3-90/3-94) - EXCEPT 3930H | 05B02 | |
| LIFT CONTROL & DRAFT CONTROL, L/CAB (4-94/) - 3430, 3930, 3930N, 3930NO, 4130, 4630 | 05B03 | |
| LIFT CONTROL & DRAFT CONTROL, W/CAB - 3430, 3930, 3930H, 4130, 4630 | 05B01 | |
| LIFT COVER | 05D02 | |
| LIFT CYLINDER & RELATED PARTS | 05D03 | |
| LIFT LEVELING BOX ASSEMBLY | 05E03 | |
| LIFT LEVELING BOX ASSEMBLY (NH-E) | 05E04 | |
| LIFT LEVELING BOX ASSEMBLY, L/IN CAB LEVELING | 05E01 | |
| LIFT LEVELING BOX ASSEMBLY, W/IN CAB | 05E02 | |
| LIFT LINKAGE | 05D04 | |
| LOW & BACK GEARS, W/SYNCHRONIZED TRANSMISSION, W/16 X 8 LUBRICATION EQUIPMENT | 07K01 | |
| | 17C01 | |
| MAIN SHIFT LEVERS, W/SYNCHRONIZED TRANSMISSION, W/16 X 8, W/CAB - 3430, 3930, 4130, 4630 | 07X01 | |
| MANIFOLD & EXHAUST SYSTEM | 06F01 | |
| MANIFOLD & TUBES, DELUXE REMOTE CONTROL | 05J03 | |
| MIRRORS - REAR VIEW - 3430, 3930, 3930H, 4130, 4630 | 15F02 | |
| OIL COOLER & RELATED PARTS FOR HORIZONTAL EXHAUST- 4130; W/HEADLAND PISTONS - 4630 | 08C01 | |
| OIL COOLER & RELATED PARTS FOR VERTICAL EXHAUST - 4130; W/HEADLAND PISTONS - 4630 | 08C01 | A |
| OIL COOLERS, HYDRAULIC & TRANSMISSION | 07V01 | |
| OIL PRESSURE GAUGE, D.I.A. (NHNA) | 12B03 | |
| OIL PUMP & OIL PAN | 06E01 | |
| OUTPUT SHAFT & GEARS, SHIFTER 1 & 2, W/SYNCHRONIZED TRANSMISSION, W/8 X 8, 16 X 8 | 07M01 | |
| PAINT (NHNA) | 17D01 | |
| PIPELINE, W/SYNCHRONIZED TRANSMISSION, W/16 X 8 | 07F02 | |
| PIPELINE, W/SYNCHRONIZED TRANSMISSION, W/8 X 8 | 07F01 | |
| PISTONS & CONNECTING RODS | 06D01 | |
| PLOW LAMP, W/CAB (3-90/10-91), 3430, 3930, 3930H, 4130 & 4630 | 11J01 | |
| PLOW LAMP, W/CROWN FENDERS, W/FLAT-TOP FENDER, L/CAB, 3930N, 3930NO, 4130N & 4130NO | 11J02 | |
| PLOW LAMP, W/FLAT-TOP FENDERS, NHNA, 3930 & 4630; W/WIDE FENDERS (NH-E), 3430, 3930, 4130 & 4630 | 11J03 | |

| | | |
|--|-------|---|
| POWER ADJUSTABLE WHEEL, 28" | 01A07 | |
| POWER ADJUSTABLE WHEEL, 30" & 38" | 01A08 | |
| POWER STEERING CYLINDER (3-90/5-94) | 03D01 | |
| POWER STEERING CYLINDER, W/2WD (6-94/) | 03D02 | |
| POWER STEERING MOTOR, E9NN3A244BA & E8NN3A244AA | 03E01 | |
| BREAKDOWN | | |
| POWER STEERING PUMP & RESERVOIR | 03C01 | |
| PTO CLUTCH VALVES | 07U06 | |
| PTO COVER ASSEMBLY | 07U02 | |
| PTO COVER, 2-SPEED SHIFTABLE, W/8 X 8, 16 X 8 (NH-E) | 07U01 | |
| PTO GUARD, DETACHABLE | 07U12 | |
| PTO GUARD, HINGED | 07U11 | |
| PTO SHAFT & GEARS, W/SYNCHRONIZED TRANSMISSION, W/16 X 8 | 07J02 | |
| PTO SHAFT & GEARS, W/SYNCHRONIZED TRANSMISSION, W/8 X 8 | 07J01 | |
| PTO SHIFT CONTROL | 07U04 | |
| PTO, 2-SPEED SHIFTABLE, W/2WD | 07U07 | |
| PUMP ASSEMBLY & RELATED PARTS, CENTER HOUSING MOUNTED | 05M01 | |
| PUMP ASSEMBLY & RELATED PARTS, ENGINE MOUNTED | 05M02 | |
| RADIATOR & RELATED PARTS | 08A01 | |
| RADIATOR SHELL & RELATED PARTS | 14A01 | |
| RADIO & RELATED PARTS | 17E01 | |
| REAR AXLE & RELATED PARTS | 04B02 | |
| REAR AXLE CENTER HOUSING | 04A01 | |
| REAR AXLE CENTER HOUSING, L/4WD | 04A02 | |
| REAR AXLE FINAL DRIVE DIFFERENTIAL | 04B01 | |
| REAR COVER, W/SYNCHRONIZED TRANSMISSION, W/8 X 8, 16 X 8 | 07B01 | |
| REAR FENDERS, ROPS MOUNTED (7-94/) | 14C05 | |
| REAR FINAL DRIVE, RING GEAR & PINION | 04C01 | |
| REAR LAMP ASSEMBLY, SIDE & FLASHER, L/CAB, W/FLAT TOP | 11E05 | |
| FENDERS - 3930N, 4130N, 4630N | | |
| REAR LAMP ASSEMBLY, SIDE & FLASHER, W/CAB, W/WIDE FENDERS - 3430, 3930, 3930H, 4130, 4630 | 11E06 | |
| REAR LAMP ASSEMBLY, STOP & FLASHER, L/CAB, W/FLAT TOP FENDERS - 3930N, 4130N, 4630N | 11E03 | |
| REAR LAMP ASSEMBLY, STOP & FLASHER, W/WIDE FENDERS, W/CAB - 3430, 3930, 3930H, 4130, 4630 | 11E04 | |
| REAR TOW HOOK (NH-E) | 17K02 | |
| REAR WEIGHTS, MANUAL ADJUSTABLE WHEEL, W/SQUARE DISC, 24", 28", 30", 34", 36", 38" | 01B01 | |
| REAR WHEEL WEIGHT KIT, PRESSED STEEL DISC | 01B05 | |
| REAR WIRING, W/CROWN FENDERS (NH-E) - 3930, 3930N, 3930NO, | 11C02 | |
| REAR WIRING, W/CROWN FENDERS, NH-E, 3430, 3930, 4130 & 4630 | 11C01 | |
| REAR WIRING, W/FLAT TOP FENDERS (NH-E) - 3930N, 4130N, 4630N | 11C04 | |
| REAR WIRING, W/WIDE FENDERS, NH-E, EXCEPT 3230 | 11C03 | |
| REAR WORKLAMPS, W/CAB (11-91/), 3430, 3930, 3930H, 4130 & 4630 | 11J01 | A |
| REDUCTION GEARBOX ASSEMBLY, W/CREEPER, W/NON- SYNCHRONIZED TRANSMISSION, W/8 X 2, D.I.A. | 07Y01 | |
| REFLECTOR, LOW POSITION | 11K01 | |
| REFLECTORS (NH-E) | 14F01 | |
| REMOTE CONTROL VALVE ASSEMBLY, DELUXE | 05J01 | |
| REMOTE CONTROL VALVE ASSEMBLY, DOUBLE SPOOL | 05H02 | |
| REMOTE CONTROL VALVE ASSEMBLY, SINGLE SPOOL | 05H01 | |
| REMOTE CONTROL VALVE COUPLER & HOSES | 05H03 | |
| RING GEAR, PINION & DIFFERENTIAL ASSEMBLY | 03G04 | |
| ROLLBAR FRAME ASSEMBLY (NH-E) | 15G01 | |
| ROLLOVER PROTECTION, FOLDABLE (NH-E) | 15G02 | |
| ROLLOVER PROTECTION, FOLDABLE (NH-E) | 15G03 | |
| ROOF ASSEMBLY, INNER - 3430, 3930, 3930H, 4130, 4630 | 15B02 | |

| | |
|--|-------|
| ROOF ASSEMBLY, OUTER - 3430, 3930, 3930H, 4130, 4630 | 15B01 |
| ROOF, W/LOW PROFILE CAB - 3430, 3930, 3930H, 4130, 4630 | 15J01 |
| ROPS (NHNA) - 3230, 3430, 3930, 3930H, 4130, 4630, 4630-O | 15G06 |
| ROPS (NHNA) - 3930N, 3930NO, 4130N, 4130NO, 4630N, 4630NO | 15G05 |
| ROPS, FOLDABLE (NHNA) - 3230, 3430, 3930, 3930H, 4130, 4630, 4630-O | 15G07 |
| ROPS, TELESCOPING (NHNA) | 15G04 |
| SAFETY EQUIPMENT | 17F01 |
| SEAT ASSEMBLY, AIR SUSPENSION, BOSTROM, W/CAB - 3430, 3930, 3930H, 4130, 4630 | 13A01 |
| SEAT ASSEMBLY, ECONOMY, BOSTROM | 13B01 |
| SEAT ASSEMBLY, GRAMMER, L/CAB - 3930N, 3930NO, 4130N, 4130NO, 4630N, 4630NO | 13D01 |
| SEAT ASSEMBLY, GRAMMER, L/CAB - EXCEPT 3930H | 13C01 |
| SHIFT CONTROL, W/CAB, W/8 X 8; W/SYNCHRONIZED TRANSMISSION, W/16 X 8, W/DUAL POWER | 07X04 |
| SHIFT LEVERS, W/SYNCHRONIZED TRANSMISSION, W/8 X 8, 16 X 8, L/CAB - EXCEPT 3930H | 07R01 |
| SHIFT LEVERS, W/SYNCHRONIZED TRANSMISSION, W/8 X 8, 16 X 8, W/CAB - 3430,3930,3930H,4130,4630 | 07R02 |
| SHIFT PATTERN & SPEED INDICATOR | 16D01 |
| SHIFTER 1 & 2, W/SYNCHRONIZED TRANSMISSION, W/8 X 8, 16 X 8, L/CAB - EXCEPT 3930H | 07N01 |
| SHIFTER 1 & 2, W/SYNCHRONIZED TRANSMISSION, W/8 X 8, 16 X 8, W/CAB - 3430, 3930, 3930H, 4130, 4630 | 07N02 |
| SHIFTER 3 & 4, HIGH & LOW, W/SYNCHRONIZED TRANSMISSION, W/8 X 8, 16 X 8, W/CAB - 3430,3930,3930H,4130,4630 | 07P02 |
| SHIFTER 3 & 4, HIGH & LOW, W/SYNCHRONIZED TRANSMISSION, W/8 X 8, L/CAB - EXCEPT 3930H | 07P01 |
| SHIFTER ASSEMBLY, REVERSE - 3430, 3930, 3930H, 4130, 4630, 4630-O | 07X05 |
| SHIFTER FRONT & REAR, W/SYNCHRONIZED TRANSMISSION, W/16 X 8, L/CAB - EXCEPT 3930H | 07Q03 |
| SHIFTER FRONT & REAR, W/SYNCHRONIZED TRANSMISSION, W/16 X 8, W/CAB - 3430,3930,3930H,4130,4630 | 07Q04 |
| SHIFTER FRONT & REAR, W/SYNCHRONIZED TRANSMISSION, W/8 X 8, L/CAB - EXCEPT 3930H | 07Q01 |
| SHIFTER FRONT & REAR, W/SYNCHRONIZED TRANSMISSION, W/8 X 8, W/CAB - 3230,3430,3930,3930H,4130,4630 | 07Q02 |
| SHUTTLE SHIFT CONTROL, W/SYNCHRONIZED TRANSMISSION, L/CAB - EXCEPT 3930H | 07X02 |
| SHUTTLE SHIFT CONTROL, W/SYNCHRONIZED TRANSMISSION, W/CAB - 3430, 3930, 3930H, 4130, 4630 | 07X03 |
| SPEEDOMETER, NH-E | 12C01 |
| STABILIZER ASSEMBLY (3-90/8-93) | 17H01 |
| STABILIZER ASSEMBLY (9-93/) | 17H02 |
| STANDARD REAR WHEELS, ROUND DISC | 01A04 |
| STANDARD REAR WHEELS, SQUARE DISC | 01A05 |
| STARTER MOTOR ASSEMBLY | 11G02 |
| STARTER MOTOR ASSEMBLY | 11G01 |
| STEERING COLUMN, L/CAB - EXCEPT 3930H | 03B03 |
| STEERING COLUMN, TILT, W/CAB - 3430, 3930, 3930H, 4130, 4630 | 03B04 |
| STEERING GEAR ASSEMBLY, MANUAL | 03B01 |
| STEERING GEAR ASSEMBLY, POWER, SINGLE DROP ARM | 03B02 |
| STEERING GEAR COVER | 14D01 |
| SWINGING DRAWBAR ASSEMBLY | 17A02 |
| SWINGING DRAWBAR ASSEMBLY, W/CENTER TOW PIN (NH-E) | 17A01 |
| SYNCHRONIZED TRANSMISSION, W/8 X 8, 16 X 8, L/CAB - EXCEPT 3930H | 07A01 |

**Thanks very much for your reading,
Want to get more information,
Please click here, Then get the complete
manual**

JustClickHere 

NOTE:

**If there is no response to click on the link above,
please download the PDF document first, and then
click on it.**

**Have any questions please write to me:
admin@servicemanualperfect.com**